

The application of localized surface plasmons resonance in Ag nanoparticles assisted Si chemical etching

Ruiqiang Ding, Han Dai, Meicheng Li, Jinjer Huang, Yingfeng Li, Mwenya Trevor, and Kevin P. Musselman

Citation: *Appl. Phys. Lett.* **104**, 011602 (2014); doi: 10.1063/1.4855615

View online: <https://doi.org/10.1063/1.4855615>

View Table of Contents: <http://aip.scitation.org/toc/apl/104/1>

Published by the [American Institute of Physics](#)

Articles you may be interested in

[High aspect ratio silicon etch: A review](#)

Journal of Applied Physics **108**, 051101 (2010); 10.1063/1.3474652

[Enhanced emission from Si-based light-emitting diodes using surface plasmons](#)

Applied Physics Letters **88**, 161102 (2006); 10.1063/1.2195695

[A role of illumination during etching to porous silicon oxidation](#)

Applied Physics Letters **75**, 826 (1999); 10.1063/1.124526

[Solid state photovoltaic cells based on localized surface plasmon-induced charge separation](#)

Applied Physics Letters **99**, 182110 (2011); 10.1063/1.3659476

[Layer roughness reduction and light harvest from Ag nanowires on a silicon surface through wet etching embedding](#)

Applied Physics Letters **111**, 021601 (2017); 10.1063/1.4993758

[Enhanced localized surface plasmon resonance obtained in two step etched silicon nanowires decorated with silver nanoparticles](#)

Applied Physics Letters **103**, 143124 (2013); 10.1063/1.4824646

This article may be downloaded for personal use only. Any other use requires prior permission of the author and AIP Publishing. The following article appeared in Ding, R., Dai, H., Li, M., Huang, J., Li, Y., Trevor, M., & Musselman, K. P. (2014). The application of localized surface plasmons resonance in Ag nanoparticles assisted Si chemical etching. *Applied Physics Letters*, 104(1), 011602 and may be found at <https://doi.org/10.1063/1.4855615>

PHYSICS TODAY

WHITEPAPERS

MANAGER'S GUIDE

Accelerate R&D with
Multiphysics Simulation

READ NOW

PRESENTED BY

 COMSOL

The application of localized surface plasmons resonance in Ag nanoparticles assisted Si chemical etching

Ruiqiang Ding,^{1,a)} Han Dai,^{1,a)} Meicheng Li,^{1,2,b)} Jinjer Huang,³ Yingfeng Li,¹ Mwenya Trevor,¹ and Kevin P. Musselman⁴

¹State Key Laboratory of Alternate Electrical Power System with Renewable Energy Sources, School of Renewable Energy, North China Electric Power University, Beijing 102206, China

²Suzhou Institute, North China Electric Power University, Suzhou 215123, China

³Harbin University of Science and Technology, Harbin 150006, China

⁴Department of Physics, University of Cambridge, Cambridge CB3 0HE, United Kingdom

(Received 4 March 2013; accepted 8 December 2013; published online 9 January 2014)

Localized surface plasmons excited by Ag nanoparticles are introduced in the chemical etching process of silicon. A special crateriform structure with gradually varying radius is achieved by the surface electromagnetic field enhancement effect of localized surface plasmons resonance (LSPR). Theoretical analysis demonstrates that the formation kinetics of the crateriform structures conforms to the local electromagnetic field enhancement and forward scattering induced by LSPR. The LSPR assisted photocatalytic etching offers a potential approach for the preparation of the surface microstructures used in optoelectronic devices. © 2014 AIP Publishing LLC.
<http://dx.doi.org/10.1063/1.4855615>

Localized surface plasmons (LSP) of Ag nanoparticles have recently attracted a lot of attention in many fields, due to their strong localized electromagnetic field enhancement and light scattering properties.¹ Examples of such fields include Raman scattering,² photovoltaic,³ and sensors.⁴ Recently, the LSP, especially localized surface plasmons resonance (LSPR) of noble metal nanoparticles, can dramatically amplify the localized electromagnetic fields and, therefore, have become an interesting topic in the visible-light photocatalyst process.^{5,6}

Silicon chemical etching is a simple and effective method to fabricate surface microstructures, and can be influenced by the electromagnetic field.^{7,8} By varying the electromagnetic field intensity, round, square, and triangular shaped surface morphologies have been obtained in Si chemical etched process.^{9,10} However, the morphologies of the etched structure by this method are finite.¹¹ Therefore, it is necessary and important to enrich the Si chemical etching method in the fabrication of microstructures. Here, we introduce the effect of LSPR on Ag nanoparticles assisted Si chemical etching process.

In this Letter, the effect of LSPR on the Si etching process, assisted by Ag nanoparticles under laser irradiation, is investigated. The photocatalytic mechanism of LSPR on the morphology of the etched structure is proved by analyzing the localized electromagnetic field enhancement and electron transport by Mie and electrochemistry theories. The obtained crateriform structure could enhance the light collection and light emission properties, and can be used in light emitting diodes (LEDs) and solar cells. This work shows an efficient way of fabricating the material surface microstructure.

In experimental, a krypton ion laser is tuned to a short wavelength ($\lambda = 476$ nm) to excite LSPR on Ag

nanoparticles, which possesses the properties of high light intensity, monochromaticity, and parallelism.^{11–13} P-type Si(111) wafers (1–2 Ω -cm) that are polished on one side are used, and by sputtering deposition and annealing processes, Ag nanoparticles are deposited on silicon surface. Then, the samples are etched with laser illumination/irradiation for 60 s in HF/H₂O₂ etchant (volume ratio; HF:H₂O₂:H₂O = 1:5:10). Every sample has two regions for comparison, one formed with laser illumination and the other without.

In the laser illuminated region, the crateriform structures are formed on Si surface as shown in Fig. 1(a), and the region without illumination only exhibit ordinary straight holes (Figs. 1(b) and 1(c)), which is typical of porous Si structure etching assisted by Ag nanoparticles.¹⁴ In both regions, the Ag nanoparticles are left at the bottom of etched structure after the etching process. In the illuminated region, the special structure characteristics of etched morphology are shown in the inset image of Fig. 1(a), which shows a crateriform top and a cone-shaped bottom. The diameter of crateriform tops range from 60 nm to 120 nm, and the corresponding Ag nanoparticles have a relative diameter ranging from 20 nm to 50 nm. The cone does not have obvious orientation, and the diameter of each crateriform structure corresponds to the Ag nanoparticles. Obviously, the two parts of the etching structure exhibit significant differences in morphology, which indicates that two different etching mechanisms work in the etching process.

From the experiment results, laser illumination in the etching process has an influence on the morphologies of the special crateriform structure. As we know, the morphology of etching structure can be greatly affected by the change of photogeneration carriers in the Si substrate under illumination.¹⁰ It is worth noting that the intensity of the electromagnetic field near Ag nanoparticles can be greatly enhanced by the excitation of LSPR, which can have great influence on the photogeneration carriers in the Si substrate.^{15,16} In our work, the formation of the crateriform structure surrounding

^{a)}R. Ding and H. Dai contributed equally to this work.

^{b)}Author to whom correspondence should be addressed. Electronic mail: mcli@ncepu.edu.cn. Fax: +86 86172951.

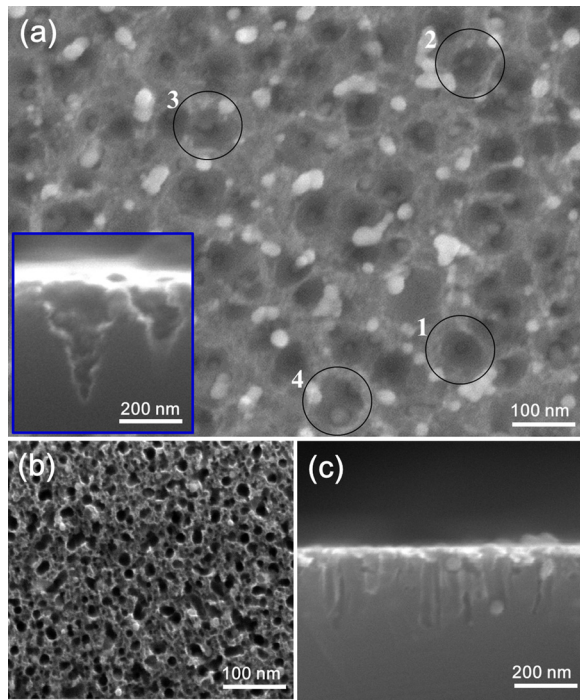


FIG. 1. SEM images of Si etch topography; (a) Plane-view of crateriform Si microstructure in laser illuminated scale with an inset image for cross-sectional view. Plane-view (b) and Cross-sectional view (c) of the same sample without light illumination, separately.

Ag nanoparticles indicates that LSPR may have an influence on the morphologies of the special structure. Thus, Mie theory, for its accurate description of the electromagnetic field of metal nanoparticles, is applied to study the electromagnetic field distribution around Ag nanoparticles.⁹ From previous studies, the electromagnetic field enhancement region of Ag nanoparticles can be described by the scattering cross section (Q_{sca}), and the expression of Q_{sca} is shown in Eq. (1) below

$$Q_{sca} = \frac{2}{x^2} \sum_{n=1}^{\infty} (2n+1)(|a_n|^2 + |b_n|^2), \quad (1)$$

where a_n and b_n are the scattering coefficients of the n th scattering electromagnetic mode. $x = 2\pi Na/\lambda$, where a is the particle diameter and λ is the wavelength of the incidence light. Taking into account the effect of the interface between the etchant and Si surface, the effective permittivity of N is set as the average value of Si substrate and etchant. The Q_{sca} of Ag nanoparticles with different diameters at wavelengths ranging from 300 nm to 1100 nm is calculated according to Eq. (1), as shown in Fig. 2. Under the laser illumination with a wavelength of 476 nm, the values of Q_{sca} increase with the diameter of Ag nanoparticles. It is surprising that the Q_{sca} of Ag nanoparticles with diameters ranging from 35 nm to 50 nm are approximately the same as the diameters of the crateriform structures, as shown in Table I. Both the Q_{sca} and the diameter of crateriform structure are increasing in accordance to the increase of the nanoparticle diameter.

Fig. 3 shows a schematic which depicts the etching process and is presented for better illustration of the similarity in value of the Q_{sca} and the crateriform. Under illumination, the scattering of Ag nanoparticle is shown in the schematic

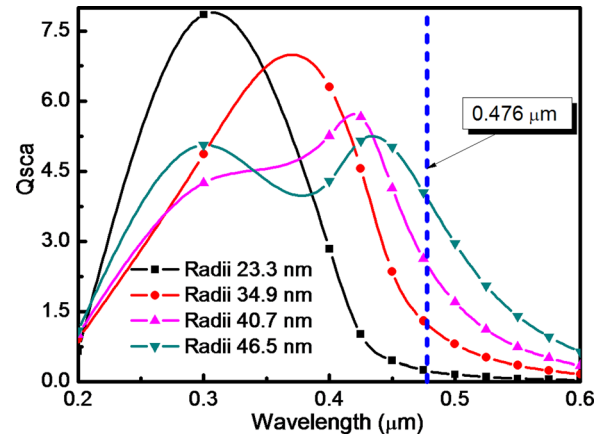


FIG. 2. Scattering cross sections of Ag nanoparticles with different particle diameters.

diagram and the main scattering direction is forward scattering. In the vicinity of the Ag nanoparticle, the electromagnetic field on the silicon substrate can be greatly amplified.^{15,16} A physical way to visualize the enhancement of the electromagnetic field is to consider the particle as having localized the plane wave of the light as a dipole field surrounding the sphere. The incident laser field surrounding the particle is described as follows:¹⁷

$$E_{induced} = [(\epsilon_1(\omega) - \epsilon_2)/(\epsilon_1(\omega) + 2\epsilon_2)]E_{laser}. \quad (2)$$

The electromagnetic field induced at the surface of the sphere is related to the laser field by Eq. (2), where $\epsilon_1(\omega)$ is complex, the frequency-dependent dielectric function of the metal and ϵ_2 is the relative permittivity of the ambient medium. At the LSPR frequency, $Re(\epsilon_1) + 2\epsilon_2 = 0$, which means that the Ag nanoparticles act as an antenna which amplifies the intensity of the scattered electromagnetic field and the overall enhancement of magnitude is roughly two orders. Due to this enhancement and the forward scattering of the electromagnetic field in the Q_{sca} region, a lot of photogenerated carriers are concentrated on the side walls of etched structure as shown in Fig. 3. The direct dissolution of Si on the side walls caused by the photogenerated carriers can be described by the chemical reaction below



where n is the number of holes per dissolved Si atom, and h^+ stands for photogenerated carriers in the silicon substrate. A lot of photogenerated carriers greatly accelerate the etching process. Thus, the etching rate is much higher than that of

TABLE I. The diameters of crateriform structures, Ag nanoparticles, and simulated scattering cross sections Q_{sca} (the numbers indicate the sampled crateriform structures in Fig. 1(a)).

Number	Crater diameter (nm)	Q_{sca} (nm)	Ag nanoparticles diameter (nm)
1	69.8	5.8	23.3
2	87.2	45.2	34.9
3	116.3	107.2	40.7
4	110.5	188.3	46.5

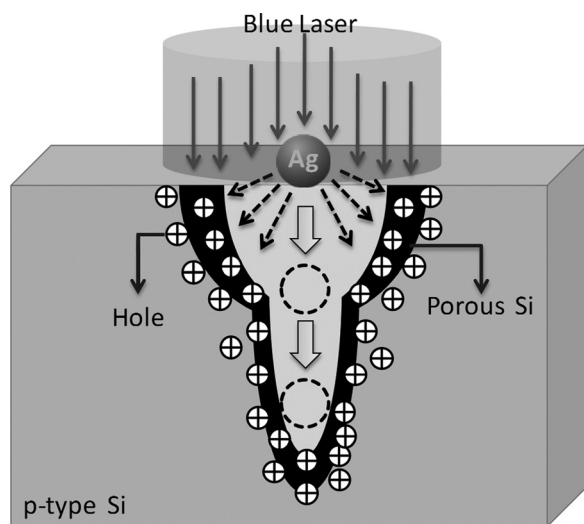


FIG. 3. Schematics of the formation mechanism of crateriform structure with laser illumination. The dashed arrows represent light scattered by Ag nanoparticle, and the dashed circles depict the sink process of Ag nanoparticle in the etching process.

the region without illumination, which results in similar value of the Q_{sca} and the crateriform. Meanwhile, the intensity of electromagnetic field is not uniform in the Q_{sca} and it reduces as the distance from the metal nanoparticles increases.¹⁸ Thus, in the Q_{sca} region, the etching rate gradually decreases as the distance from Ag nanoparticles increases, which forms the special crateriform morphology. Previous studies have shown that the cone-shaped bottom formed under the crateriform top, as depicted in Fig. 3, exhibits typical Ag nanoparticles assisted Si etching results.⁷ This indicates that the LSPR only works at a certain depth near the surface of Si and is caused by the significant reduction in electromagnetic field intensity. This decrease can be attributed to two aspects: The electromagnetic field absorption of porous Si on the side walls of the etched structure as shown in Fig. 1(a); and the shallow penetration of light in silicon (about 450 nm) at the wavelength of 476 nm.¹⁹ Therefore, from the above analysis, it has been proven that LSPR is effective in the formation of the crateriform structure in etching process.

However, in some instances, the Q_{sca} and the etching diameters of some Ag nanoparticles do not comply with the above rules. For Ag nanoparticles with diameter less than 30 nm, the Q_{sca} is much smaller than the diameter of particle, indicating that the Mie scattering theory is not effective. In this situation, the etching process can be explained by the Ag nanoparticles assisted electrochemical catalytic etching. Ag nanoparticles are oxidized by H_2O_2 , and the holes are generated on the Ag nanoparticles. Then, the holes are injected into the valence band of Si, which leads to the local oxidation and dissolution of Si atoms underneath the Ag particles.²⁰ By preliminary calculation, the turnover frequency is about 3500/min at common Ag nanoparticles assisted Si etching and increased to around 5000/min under illumination. Under laser illumination, to some extent, the catalytic activity of Ag nanoparticles has increased. Thus, the abnormally large diameters of the etching morphology of these

small particles can be attributed to the high electrochemical catalytic activity of smaller Ag nanoparticles.

It is well known that a textured surface with cone-shaped holes can significantly improve the efficiency of the LED and the solar cells.²¹ This crateriform structure has both light trapping and light collecting properties and has great potential to be applied in the devices.

In summary, LSPR has been employed for Si surface microstructure fabrication in chemical etching process. The crateriform structure is formed on silicon surface in the etching process. The mechanism of the formation of the crateriform structure is revealed by Mie theory. The calculated results prove that LSPR has a dominant role in the formation of the crateriform structure. Furthermore, the results also indicate that LSPR only works at a depth near the surface of silicon in the etching process. This work shows an efficient way for application of LSPR in the chemical etching process to enrich the morphologies of the material surface microstructure.

This work was supported by the National Natural Science Foundation of China (Nos. 91333122, 51372082, 51172069, 50972032, 61204064, and 51202067), and Ph.D. Programs Foundation of Ministry of Education of China (20130036110012, 20110036110006), and the Fundamental Research Funds for the Central Universities (Key Project No. 11ZG02).

- ¹W. L. Barnes, A. Dereux, and T. W. Ebbesen, *Nature* **424**, 824 (2003).
- ²K. Saravanan, B. K. Panigrahi, R. Krishnan, and K. G. M. Nair, *J. Appl. Phys.* **113**, 033512 (2013).
- ³T. Holmgaard and S. I. Bozhevolnyi, *Appl. Phys. Lett.* **92**, 011124 (2008).
- ⁴A. J. Haes, S. L. Zou, G. C. Schatz, and R. P. Van Duyne, *J. Phys. Chem. B* **108**, 109 (2004).
- ⁵P. Wang, B. B. Huang, X. Y. Qin, and X. Y. Zhang, *Angew. Chem. Int. Ed.* **47**, 7931 (2008).
- ⁶P. Wang, B. B. Huang, X. X. Zhang, and X. Y. Qin, *Chem. Eur. J.* **15**, 1821 (2009).
- ⁷E. A. Ponomarev and C. Lévy-Clément, *Electrochem. Solid-State Lett.* **1**, 42 (1998).
- ⁸J. Salonen, V.-P. Lehto, M. Björkqvist, and E. Laine, *Appl. Phys. Lett.* **75**, 826 (1999).
- ⁹C. F. D. Bohren and R. Huffman, *Absorption and Scattering of Light by Small Particles* (Wiley, New York, 1983).
- ¹⁰C. Lévy-Clément, A. Lagoubi, and M. Tamkiewicz, *J. Electrochem. Soc.* **141**, 958 (1994).
- ¹¹S. Pillai, K. R. Catchpole, T. Trupke, G. Zhang, J. Zhao, and M. A. Green, *Appl. Phys. Lett.* **88**, 161102 (2006).
- ¹²S. Chattopadhyay, X. L. Li, and P. W. Bohn, *J. Appl. Phys.* **91**, 6134 (2002).
- ¹³X. H. Xiao, F. Ren, X. D. Zhou, T. C. Peng, W. Wu, X. N. Peng, X. F. Yu, and C. Z. Jiang, *Appl. Phys. Lett.* **97**, 071909 (2010).
- ¹⁴F. Wang, H. Y. Yu, X. C. Wang, J. S. Li, X. W. Sun, M. F. Yang, S. M. Wong, and H. Y. Zheng, *J. Appl. Phys.* **108**, 024301 (2010).
- ¹⁵H. Dai, M. C. Li, and Y. F. Li, *Opt. Express* **20**, A502 (2012).
- ¹⁶K. H. Su, Q. H. Wei, X. Zhang, J. J. Mock, D. R. Smith, and S. Schultz, *Nano Lett.* **3**, 1087 (2003).
- ¹⁷A. Campion and P. Kambhampati, *Chem. Soc. Rev.* **27**, 241 (1998).
- ¹⁸*Optical Properties of Metal Clusters*, edited by U. Kreibig and M. Vollmer (Springer, Berlin, 1995).
- ¹⁹D. E. Aspnes and A. A. Studna, *Phys. Rev. B* **27**, 985 (1983).
- ²⁰F. Bai, M. C. Li, D. D. Song, H. Yu, B. Jiang, and Y. F. Li, *J. Solid State Chem.* **196**, 596 (2012).
- ²¹T. Fujii, A. David, M. Iza, S. P. DenBaars, E. L. Hu, C. Weisbuch, and S. Nakamura, *Phys. Status Solidi C* **2**, 2836 (2005).